



## Activating Trimble Access on the TSC3 without a Trimble Connected Community Account

Before using Trimble Access on the TSC3, the software must be activated.

**\*\*An Internet Connection is required to Activate Trimble Access\*\***

### Downloading and Installing the Trimble Access Installation Manager

1. Download the Trimble Access Installation Manager to your desktop computer. Go to [www.trimble.com/taim](http://www.trimble.com/taim).

#### Support

---

The following online support resources are available for this product:

##### [Solution Center](#)

**\*NEW\*** Use the advanced searching capabilities of the Solution Center to quickly find the information you are looking for. The Solution Center includes the information you can find in the locations below.

##### [Downloads](#)

(70 KB)

2. Click on Downloads.

#### Downloads

---

##### [Trimble Access Installation Manager](#)

##### [Trimble Access Help Files and Release Notes](#)

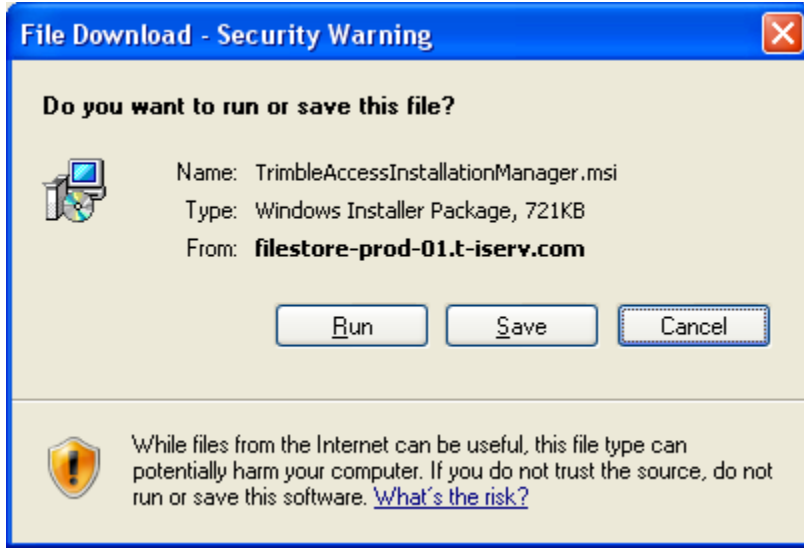
##### [Custom Export Style Sheets](#)

Download the latest Trimble Access/Trimble Survey Controller Style Sheets. These style sheets can only be used with Trimble Access or Trimble Survey Controller v11.x or later.

##### [Trimble Access Monitoring Style Sheets](#)

Download the latest style sheets that can be used for creating reports from Observation XML files that can be exported from the Trimble Access Monitoring software.

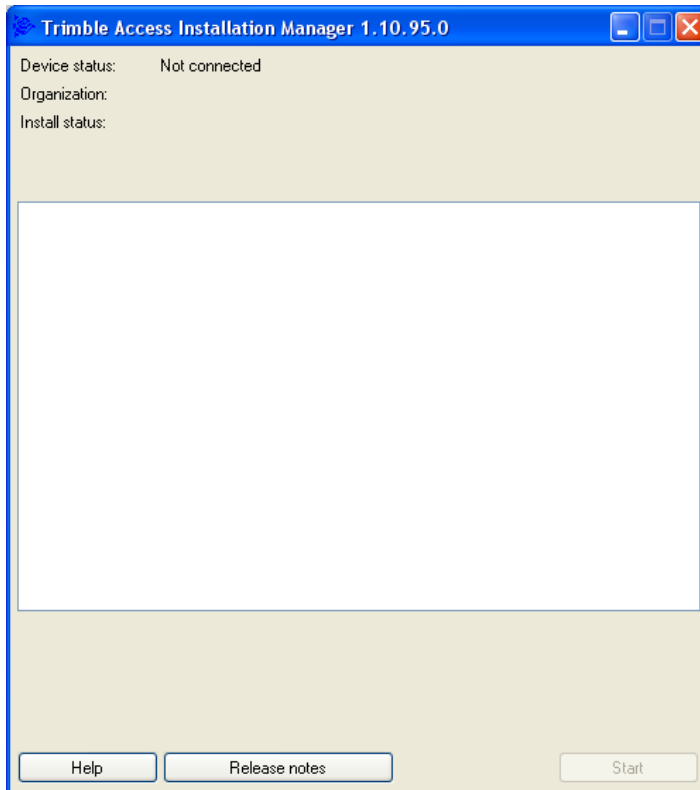
3. Click on Trimble Access Installation Manager.



4. Click Run. Follow all instructions to download and install Trimble Access Installation Manager.

### Starting the Trimble Access Installation Manager Software


1. Click on Start/All Programs/Trimble Access Installation Manager.

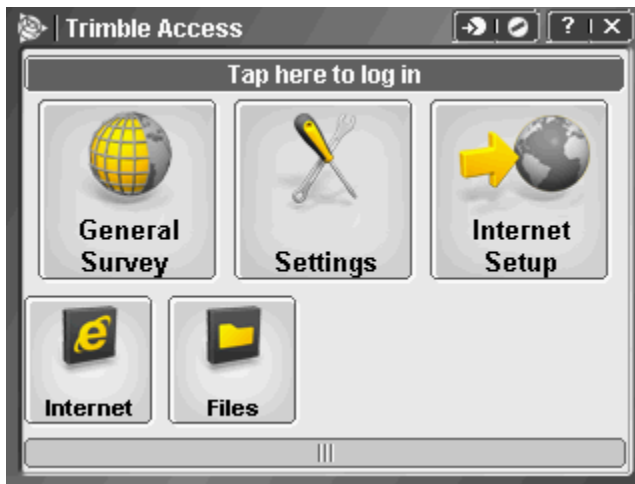


2. Establish a connection between your computer and the TSC3.

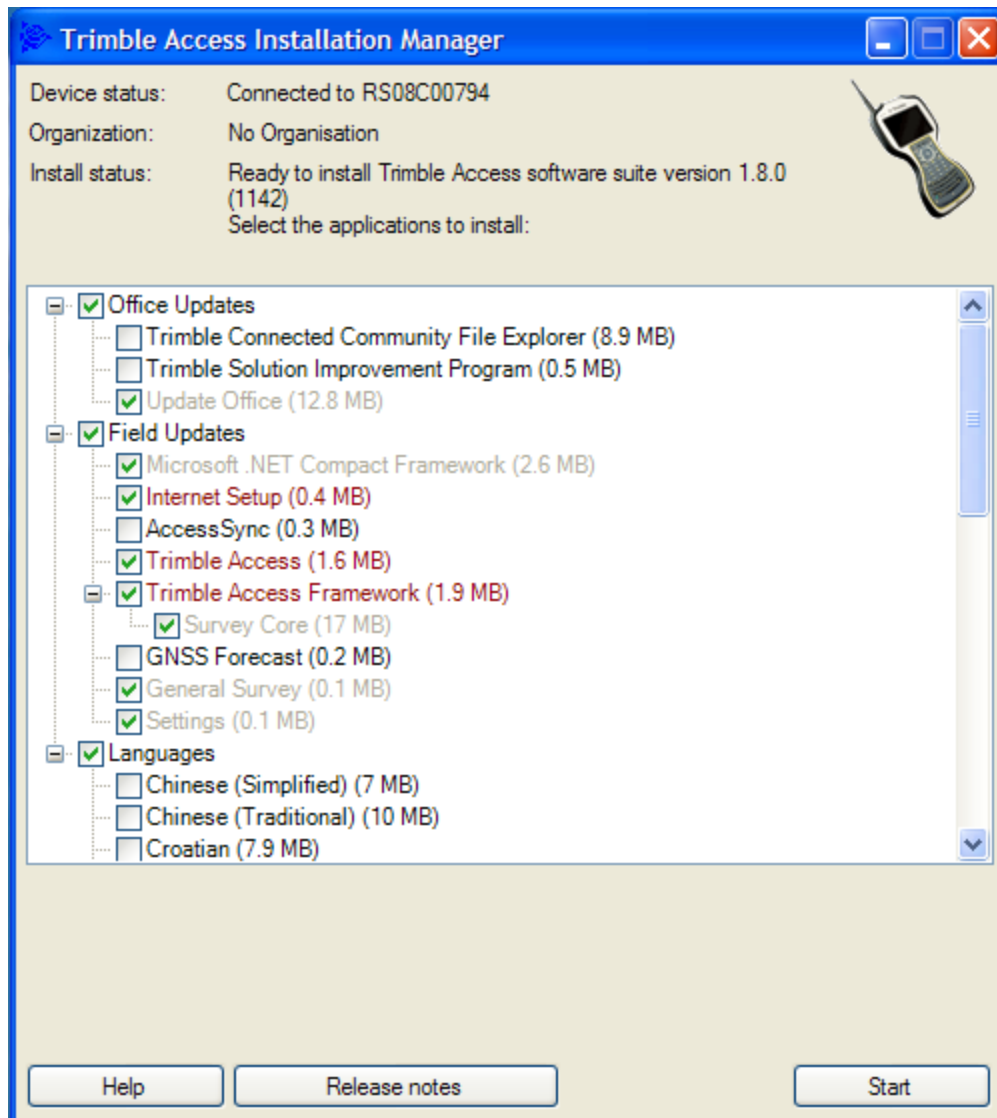
If your computer operating system is Windows XP or earlier use Microsoft ActiveSync.

If your computer operating system is Vista or Windows 7 use Mobile Device Center.

3. Close out of the Trimble Access software on the TSC3 by tapping the  at the top right.



4. After the connection is established you will see the Trimble Activation Manger connecting to the server and informing you what is currently installed on the TSC3 and what can be installed.



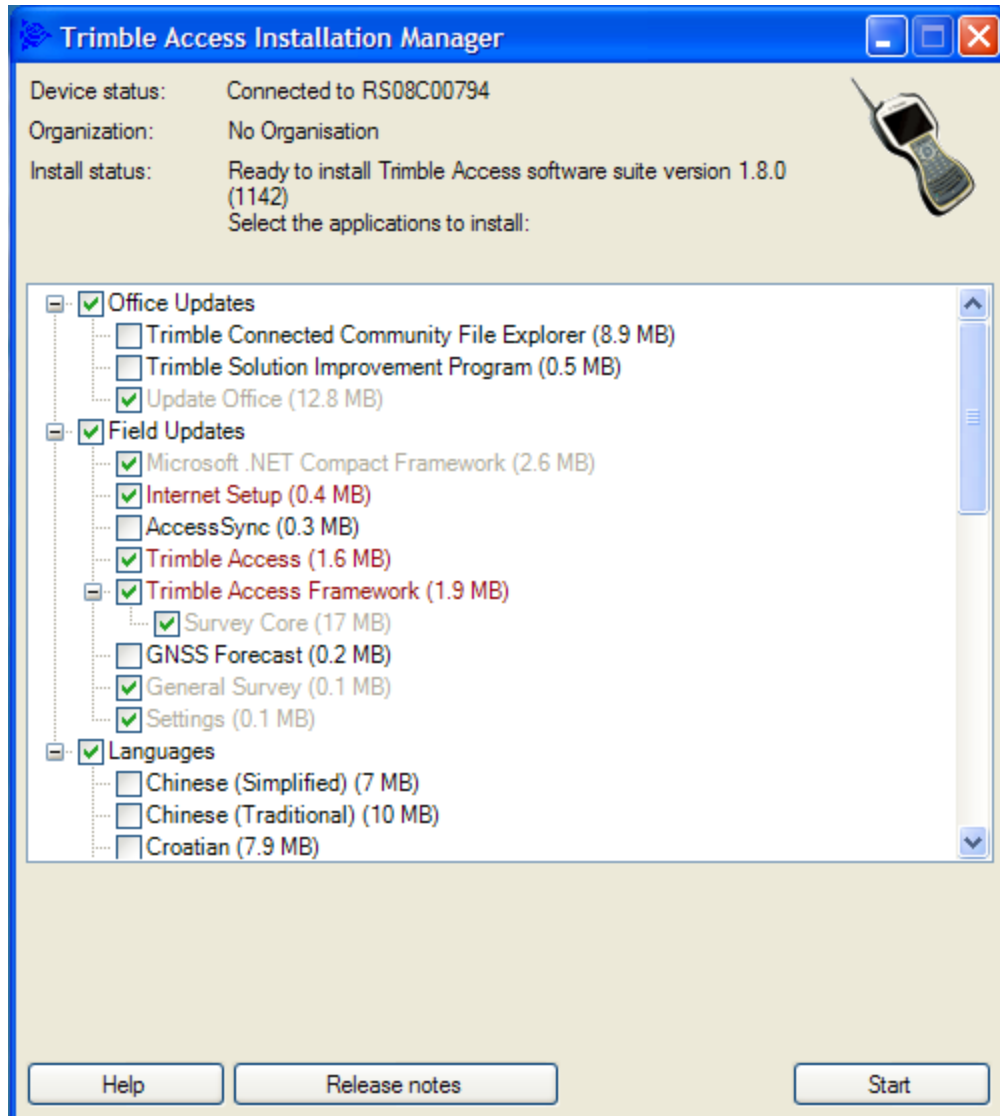
## 5. Office Updates

**Trimble Connected Community File Explorer** – Check this box if you have enrolled in the Trimble Connected Community.

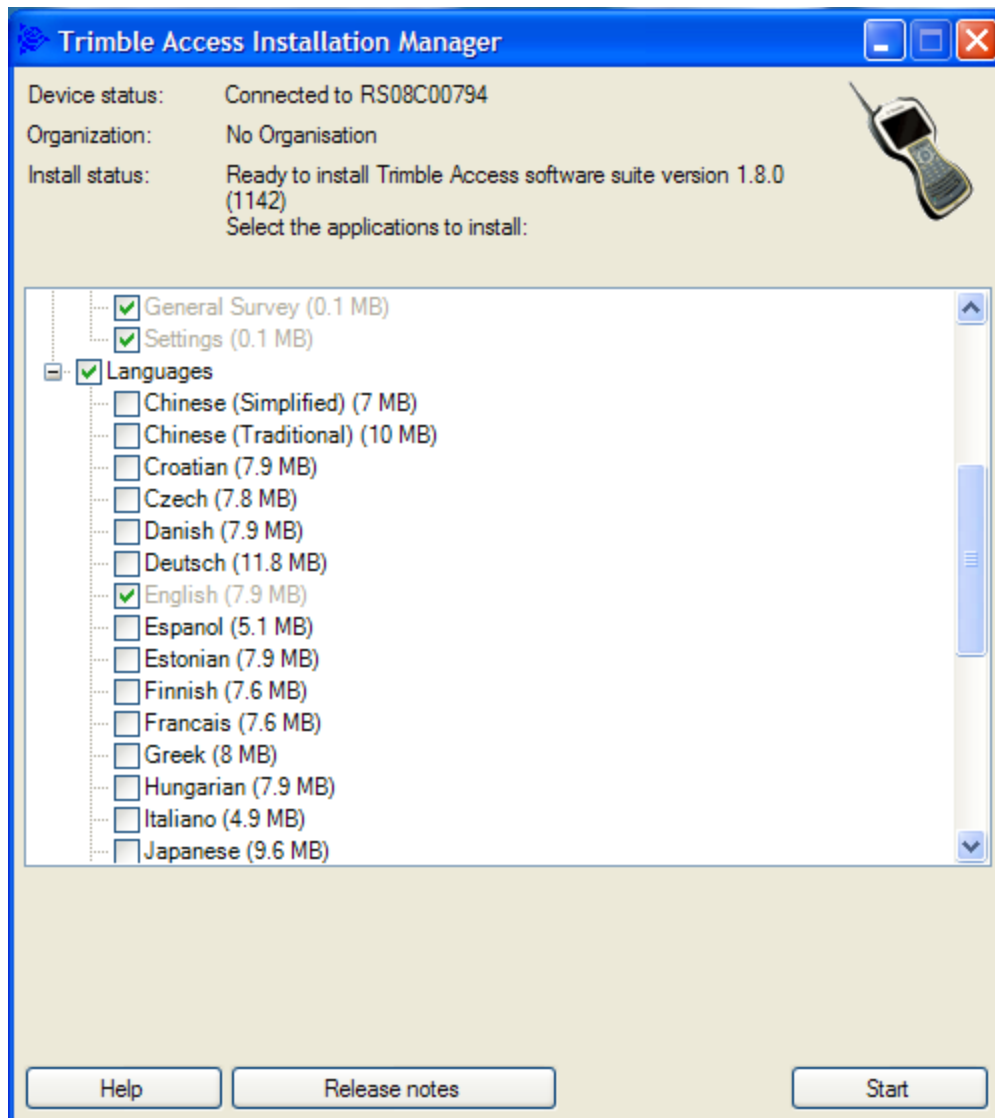
**Trimble Solution Improvement Program** – Check this box if you want to assist Trimble in improving their programs.

**Update Office** – Check this box to update the office software.

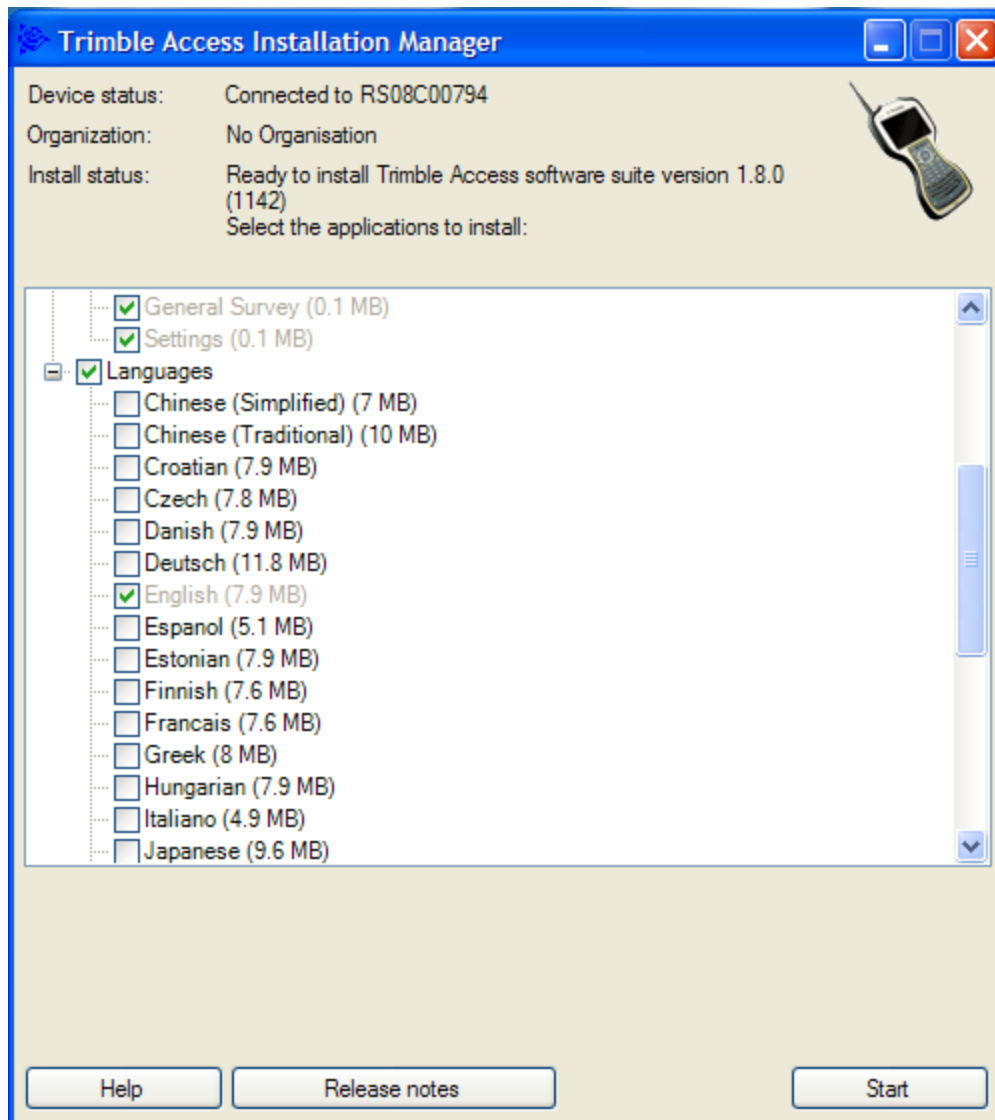
- If you have purchased any of the Options for Trimble Access (i.e., Roads, Tunnels, Mines, Monitoring) under field updates check the box to install the option.



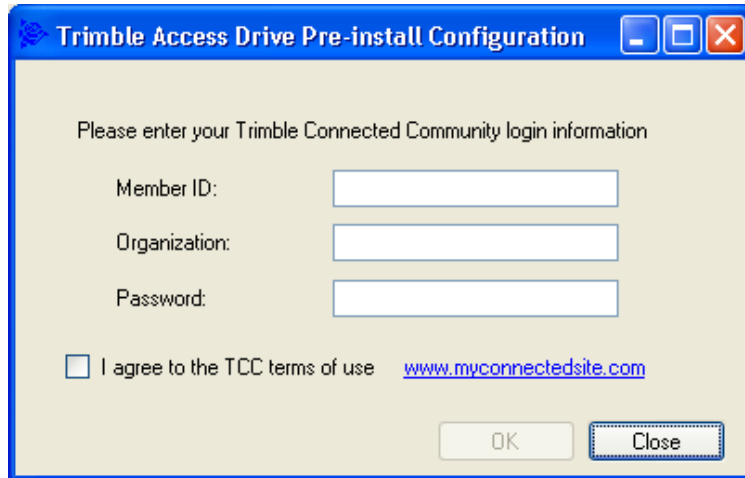
7. Under Languages scroll down to find the language pack verify there is a check in the box.



8. Click Start.



- The Trimble Access Installation Manager will install the options that you have checked and activate the Trimble Access software on the TSC3.
- Note:** If you get the following message you accidentally checked the box for Trimble Access Drive to be installed on your computer.

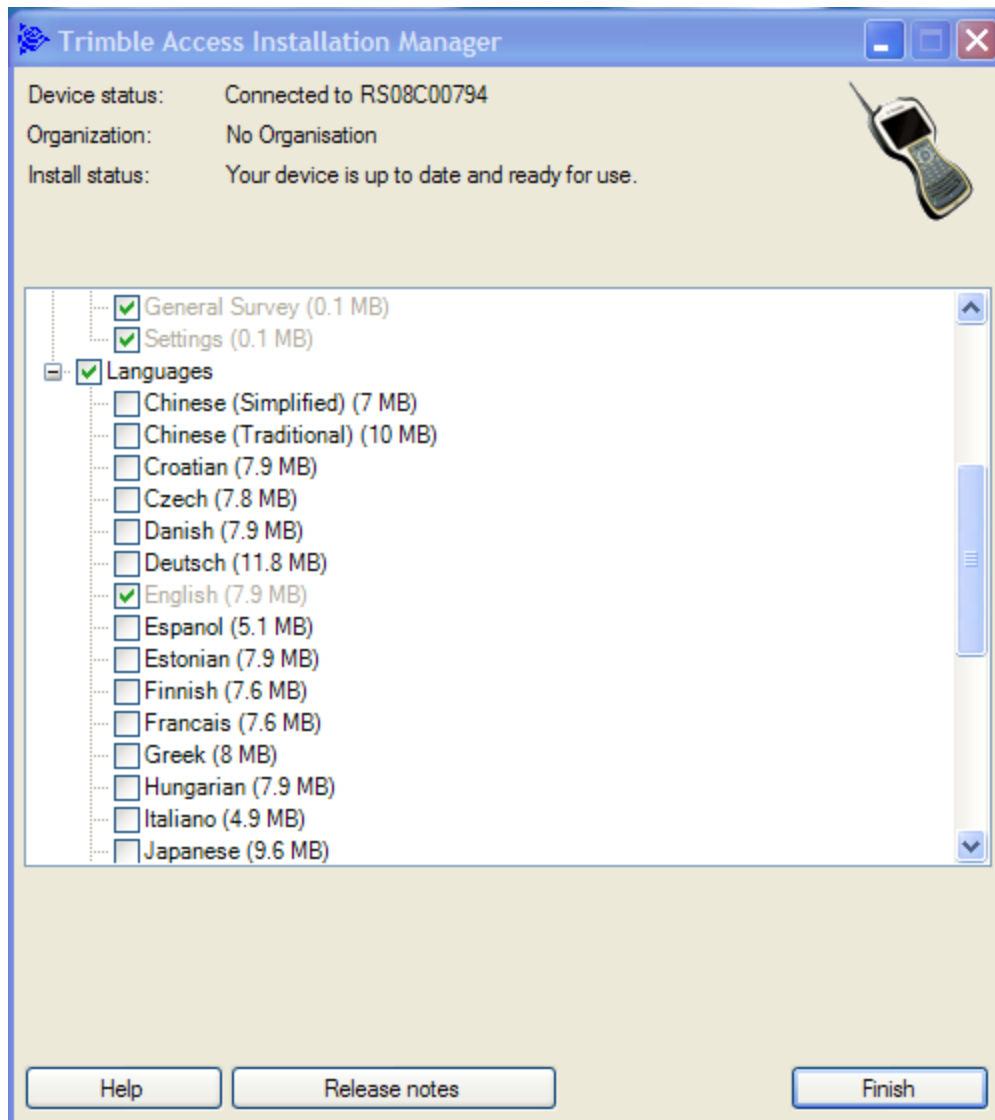


The image shows a Windows-style dialog box titled "Trimble Access Drive Pre-install Configuration". The dialog has a blue title bar with standard minimize, maximize, and close buttons. The main content area is light beige and contains the following text and controls:

- Text: "Please enter your Trimble Connected Community login information"
- Form fields:
  - Member ID: [text input box]
  - Organization: [text input box]
  - Password: [text input box]
- Text: "I agree to the TCC terms of use" followed by a blue hyperlink "[www.myconnectedsite.com](http://www.myconnectedsite.com)"
- Buttons: "OK" and "Close" (the "Close" button is highlighted with a dashed border)

11. Click Close to continue with the activation of Trimble Access.
12. Once Trimble Access has been activated the TSC3 will automatically reset itself.
13. With the reset of the TSC3 complete it will automatically connect back to your computer either through ActiveSync or Windows Mobile Device Center.





14. Click Finish.

15. Trimble Access will have been started on the TSC3.