

Making a Bluetooth Connection between a TSC3 with Trimble Access and a Trimble Survey Receiver

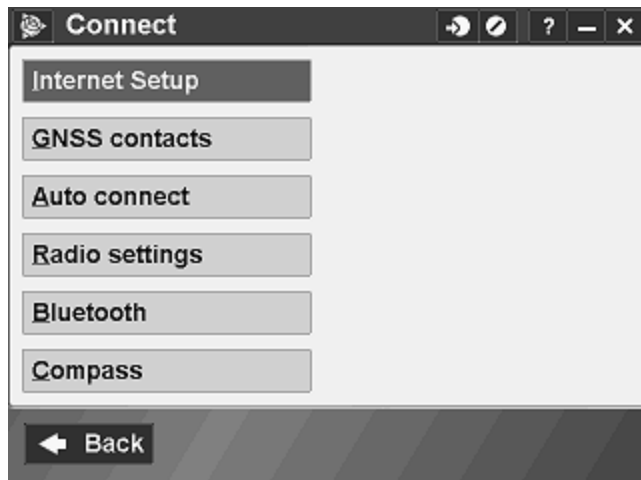
1. Start Trimble Access.
2. Log into Trimble Access.



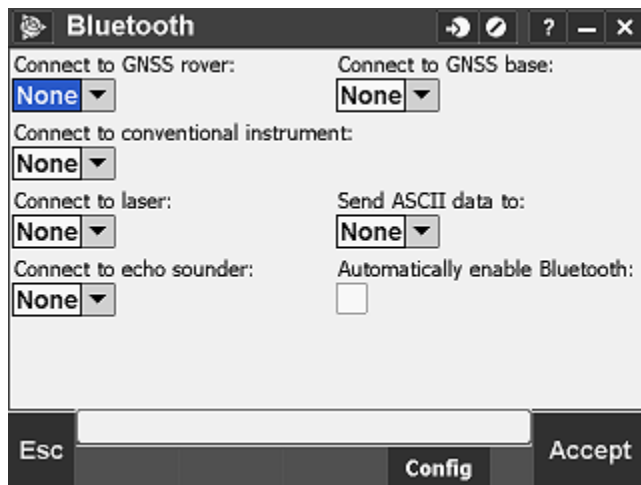
3. Tap on Settings.



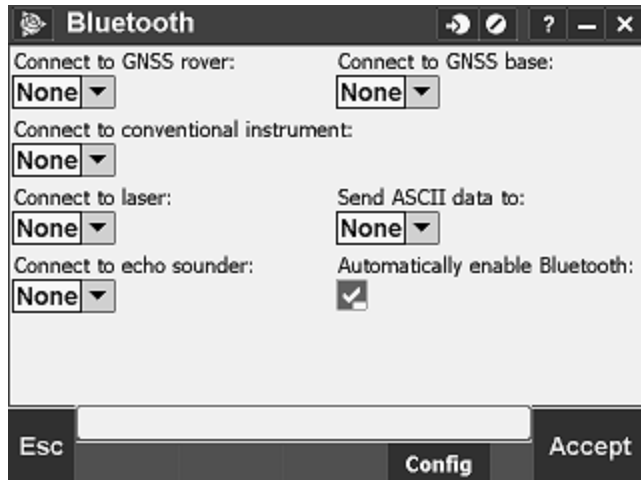
4. Tap on Connect.



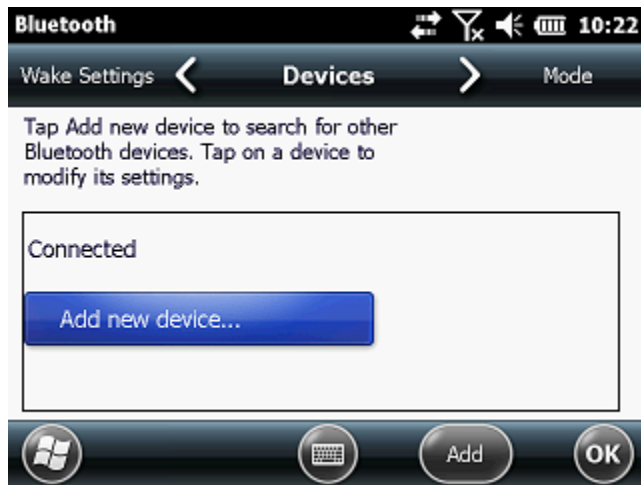
5. Tap on Bluetooth.



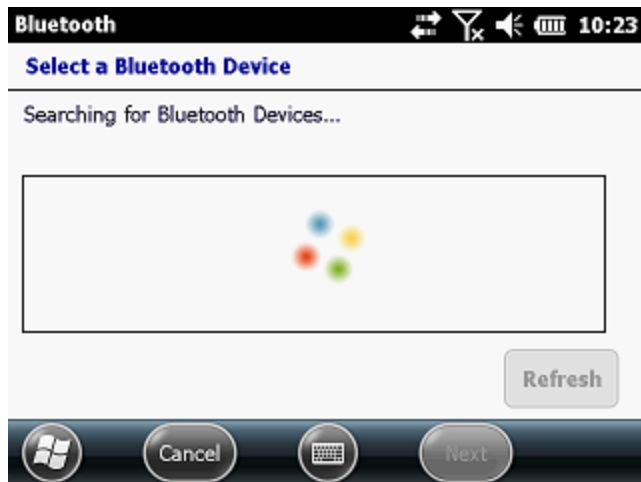
6. Turn on your Trimble Bluetooth capable receiver.
7. Tap on Automatically enable Bluetooth.



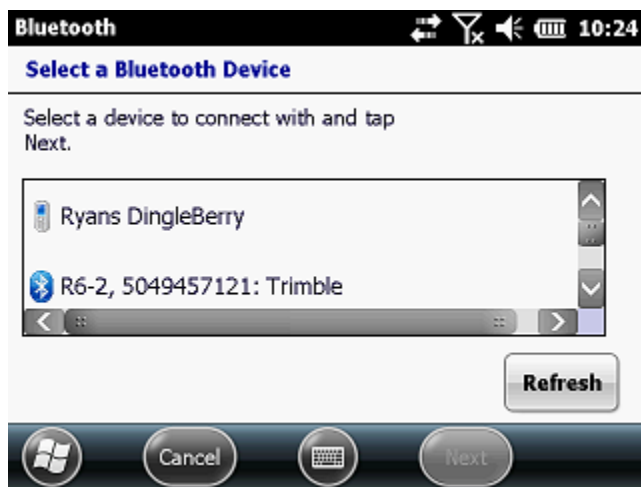
8. Tap on **Config**.



9. Tap on Add new device.

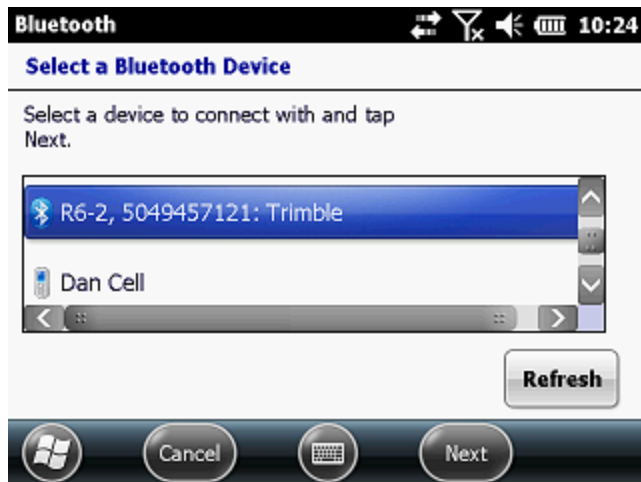


10. The TSC3 is performing a Bluetooth scan of all available devices.

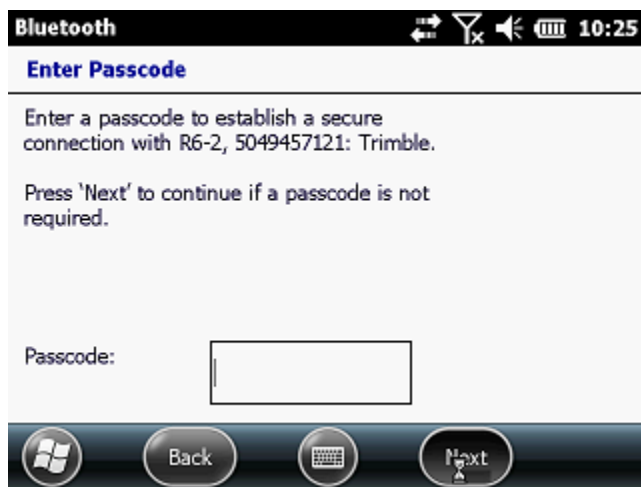


11. Once it has found your receiver you will see it listed in the Select a Bluetooth Device. Verify that this is the correct device by looking at the serial number on the bottom of the receiver and comparing it to the serial number on the screen of the TSC3.

12. Tap to highlight.

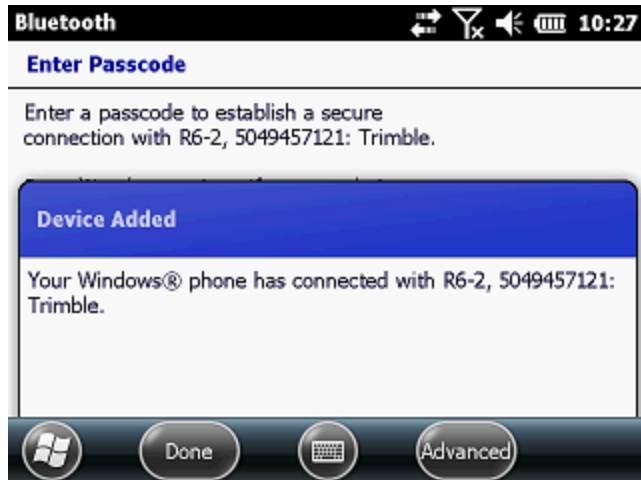


13. Tap Next at the bottom.



14. You are asked to enter a Passkey. Certain Bluetooth devices require a Passkey (typically a 4 digit number) to establish a connection. **Trimble receivers do not require a passkey.**

15. Tap Next.

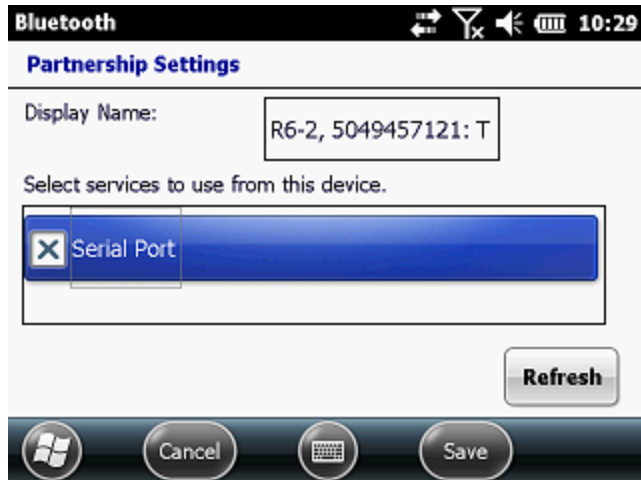


16. Tap Advanced at the bottom.



17. You are asked to enter a Display Name for the device. You can customize this name or leave it at the default.

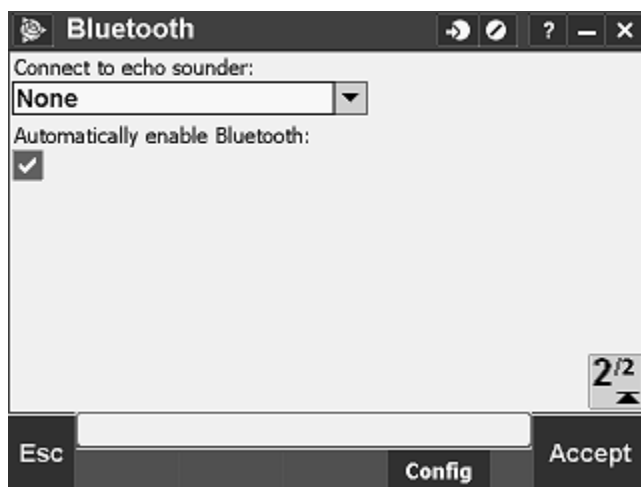
18. Tap the check box for Serial Port.




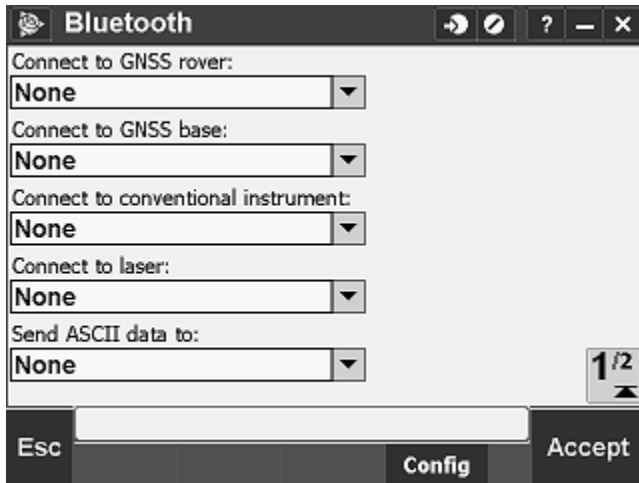
19. Tap Save at the bottom.



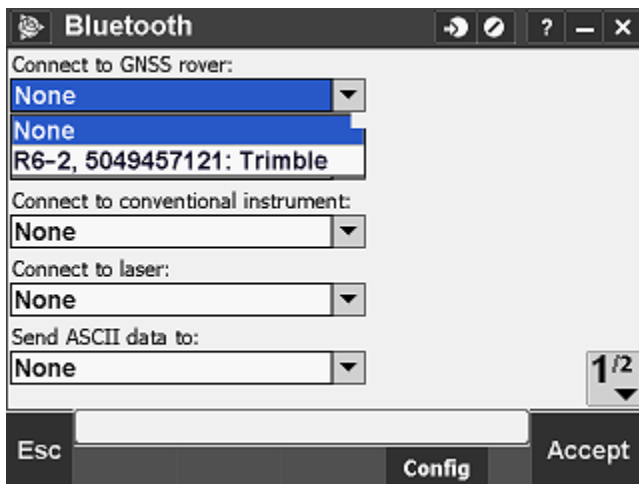
20. Tap OK at the bottom right.



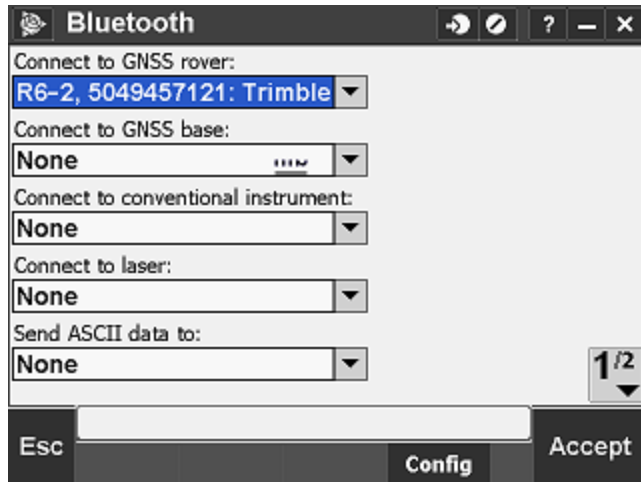
21. Tap on  to go to the first page.



22. If your receiver is a rover tap on the drop down list for Connect to GNSS rover. If your receiver is a base tap on the drop down list for Connect to GNSS base.



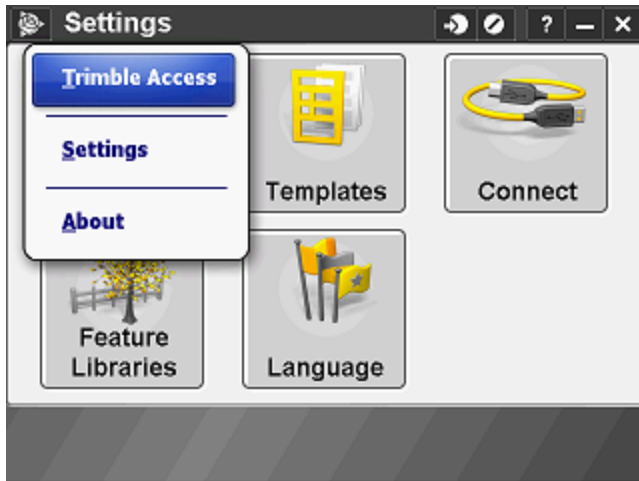
23. Select your receiver with the correct serial number from the drop down list.



24. Tap Accept.



25. Tap the  icon at the top left.



26. Tap on Trimble Access.



27. Tap on General Survey.



28. There may not be a connection to receiver immediately. Be patient it may take a few moments for the connection to be established. Once the connection has been established you will see information in the status bar of Trimble Access.